

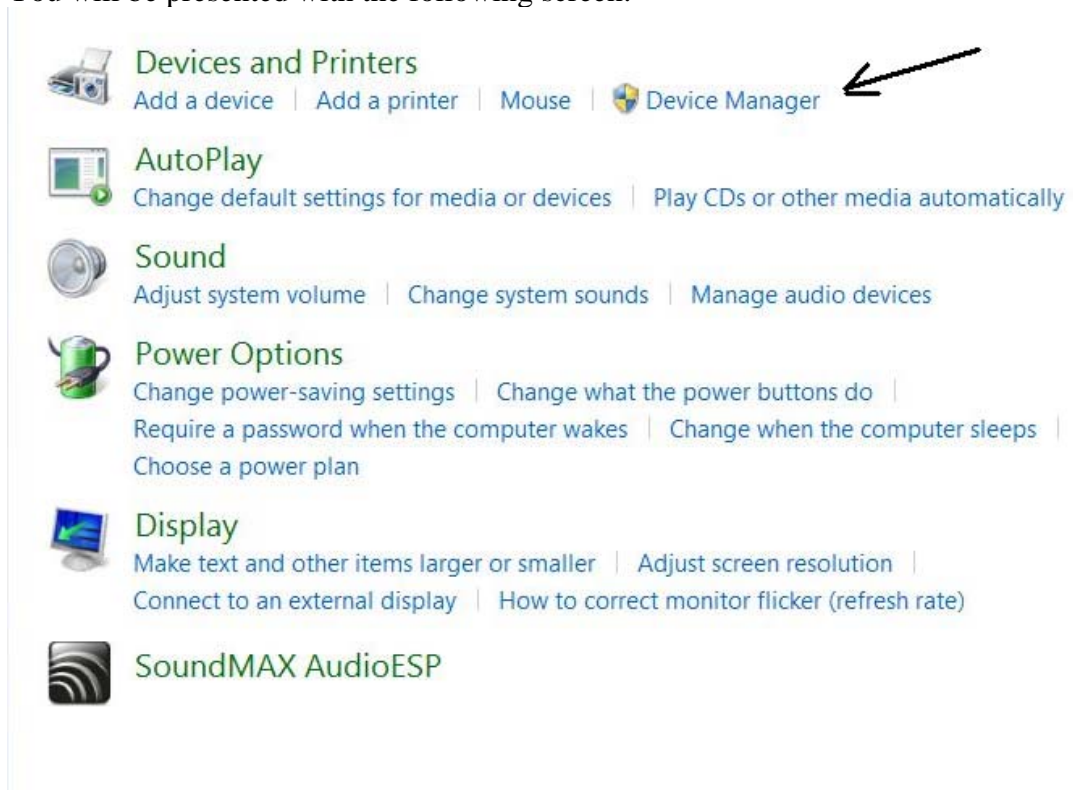
Installation of USB Trek Instruments On Windows 7

January 24, 2011

1. Locate the Trek USB drivers for “Windows 7” folder, note its location.
2. Connect the Trek Instrument. In the bottom right corner of the display, Windows 7 will attempt to locate a driver for the instrument, and ultimately fail.
3. Click on the “start” button in the lower left corner and select “Control Panel”.
4. When the control panel opens, select the “Hardware and Sound” Option”

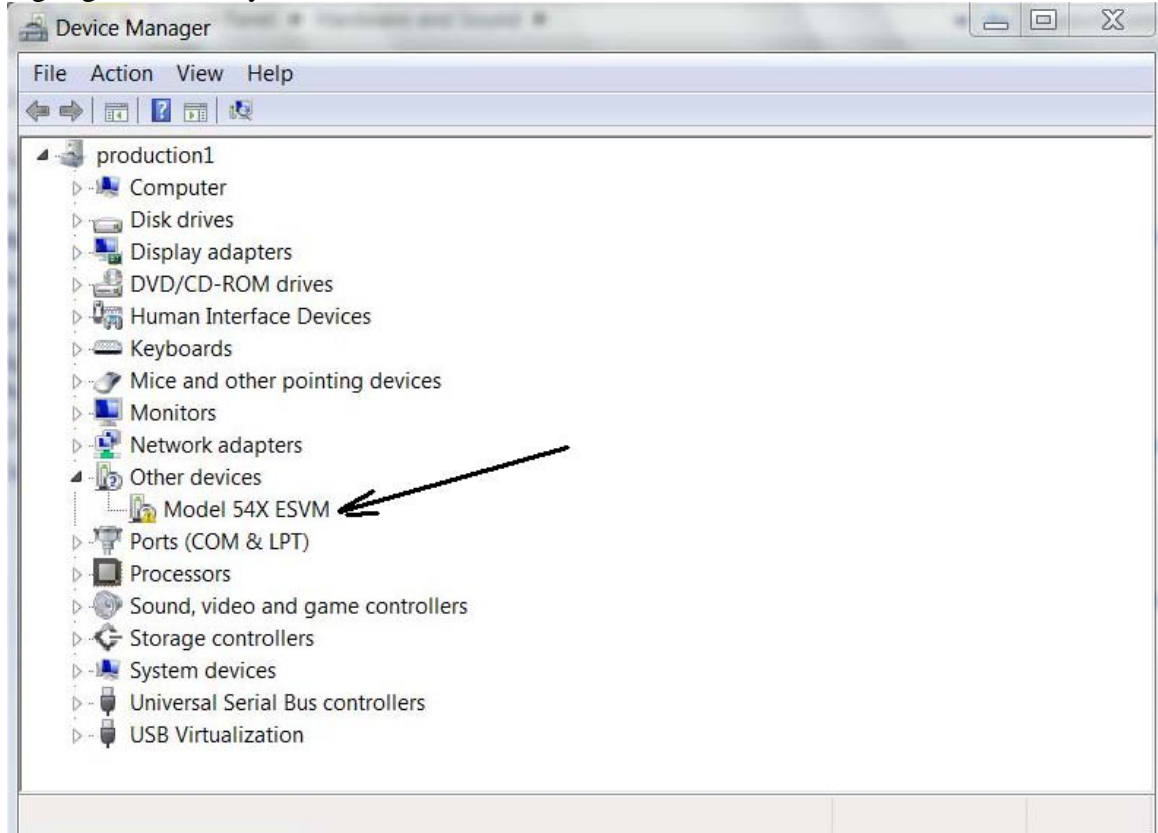


5. You will be presented with the following screen:



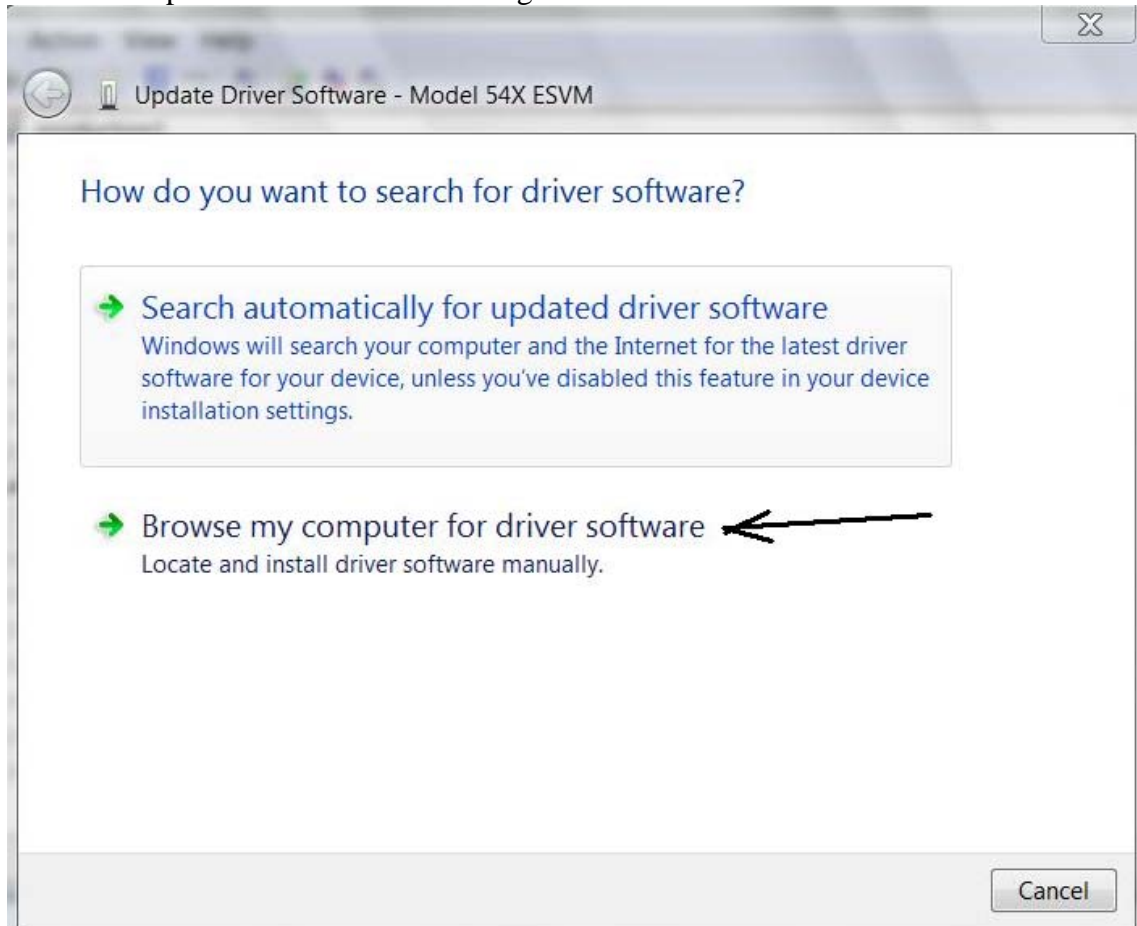
Select “Device Manager”

6. You should see the following screen, with the Trek Instrument requiring drivers highlighted with a yellow exclamation mark.



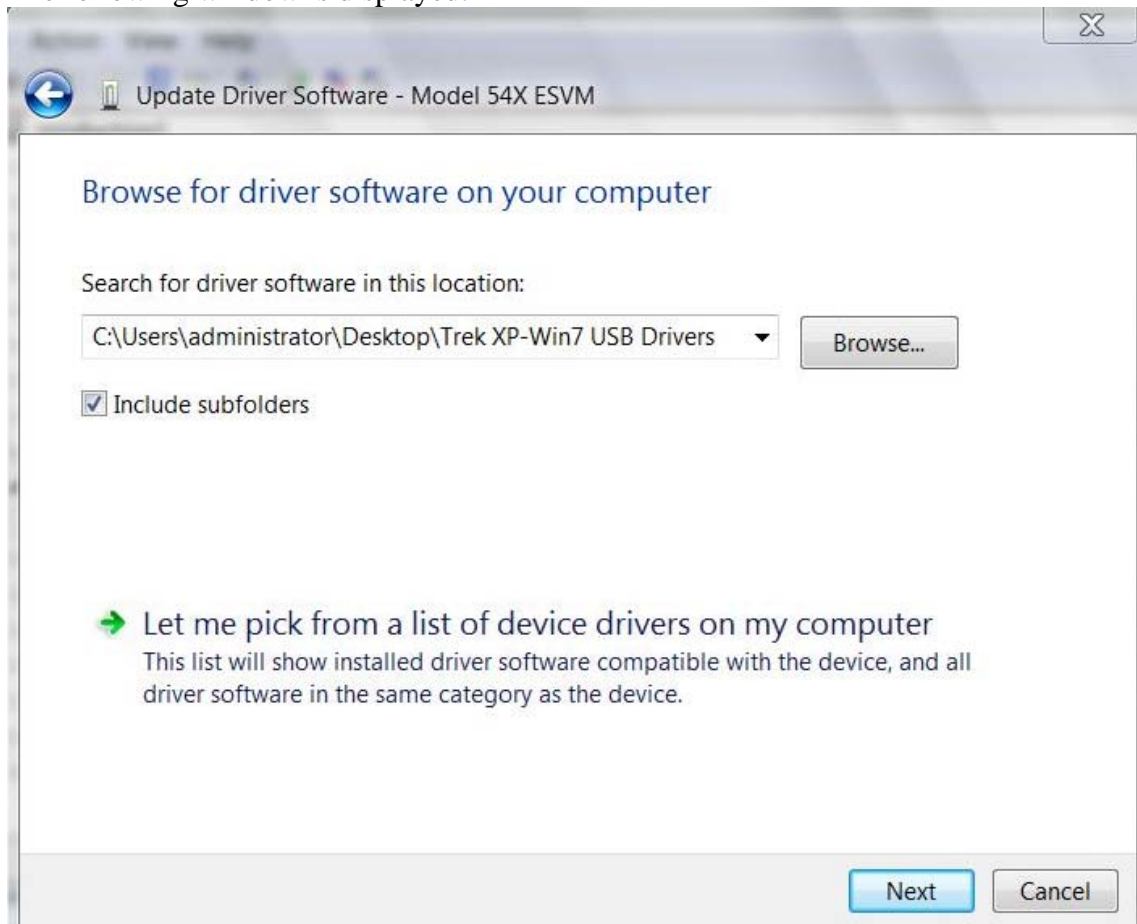
7. **Right** click on this icon, and select the “Update Driver Software” Option

8. You will be presented with the following screen



select the "Browse my computer for driver software" option.

9. The following window is displayed:



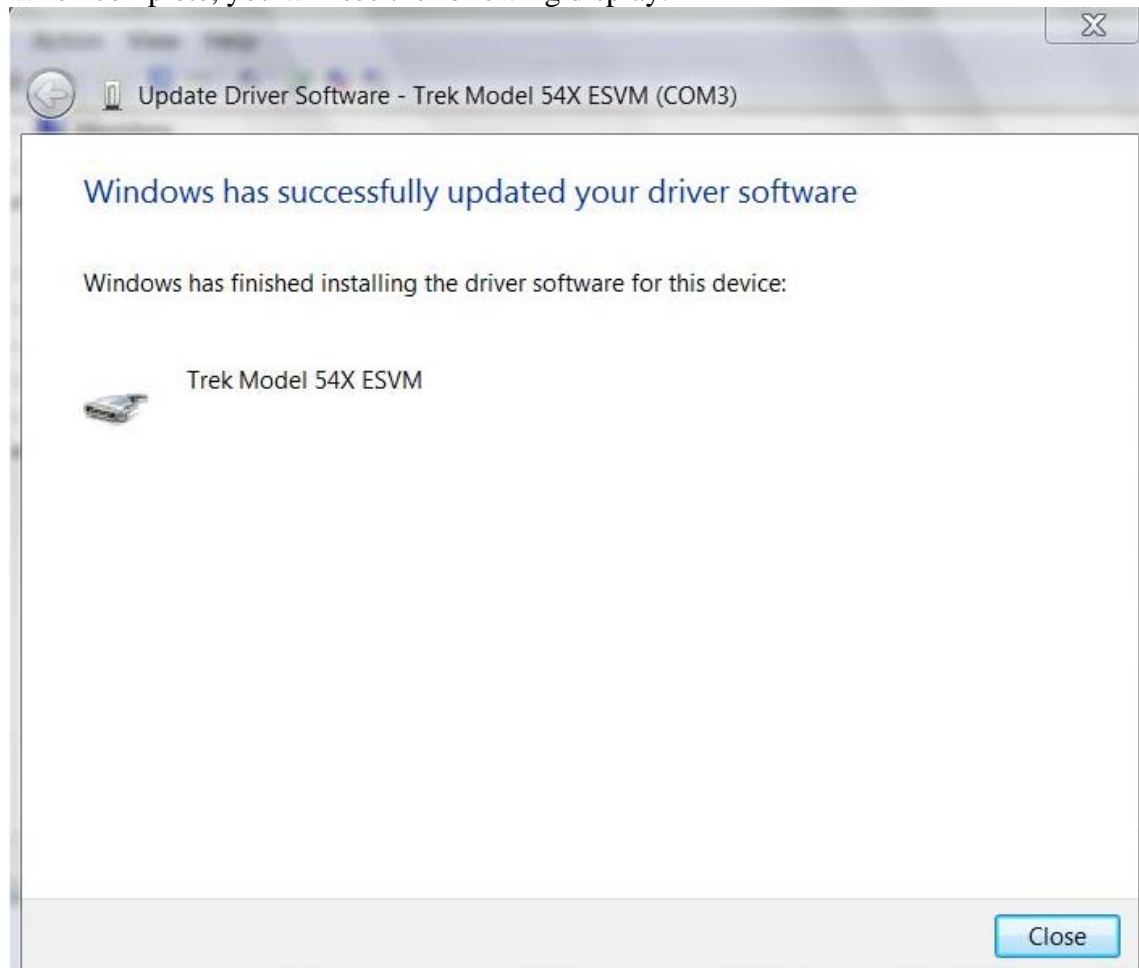
Make sure the “Include subfolder” box is selected, and then click on the “Browse..”button. Select the folder that contains the Widows 7 drivers that you noted in Step 1. Just select the “Trek XP-Win7 USB driver” folder, **not** the sub-sub-folders within it.

10. Click on the “Next button”

11. Installation will begin, but you will be presented with the following screen:

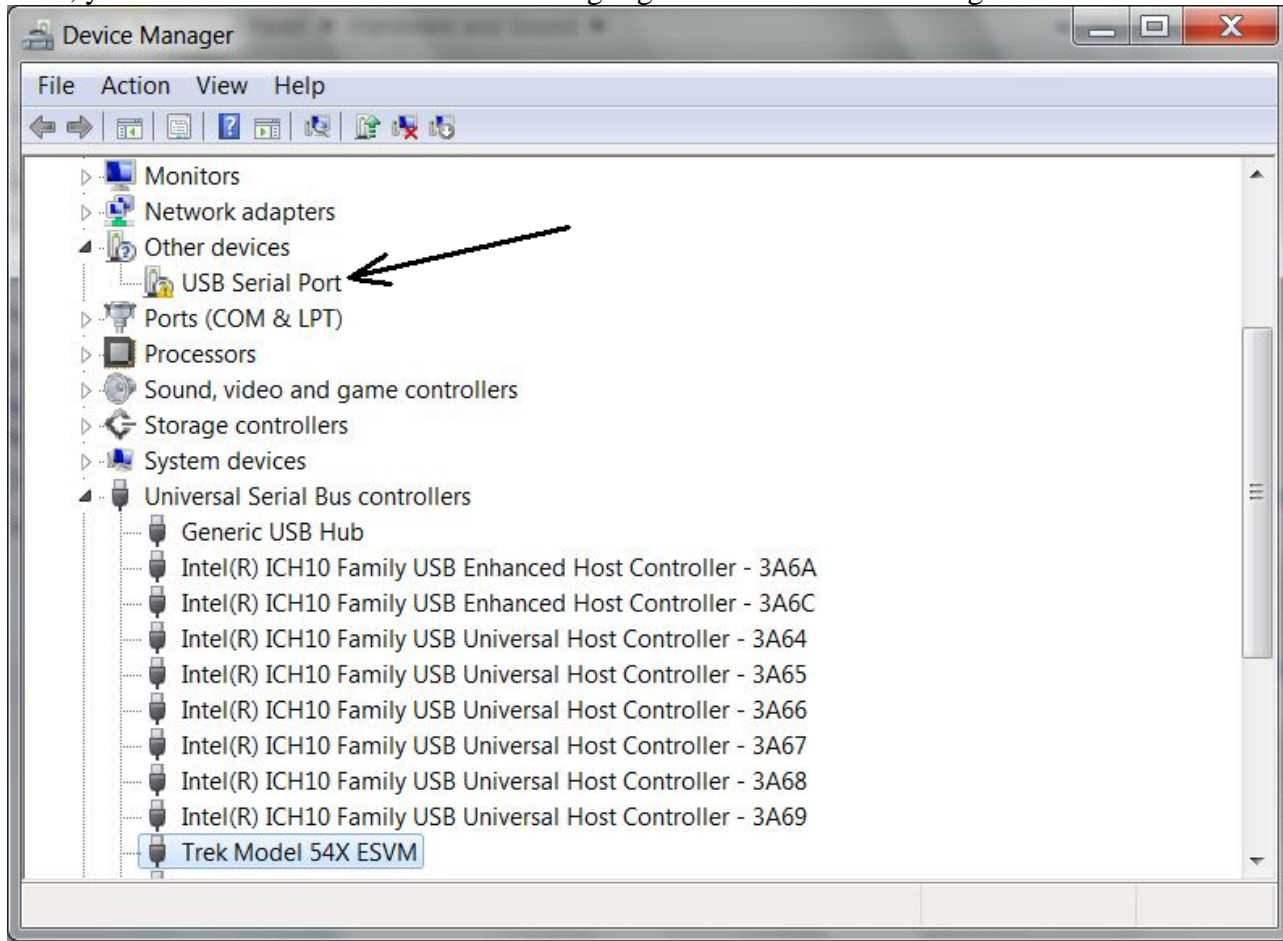


Select the "Install this driver software anyway" selection. The drivers will install. When complete, you will see the following display.

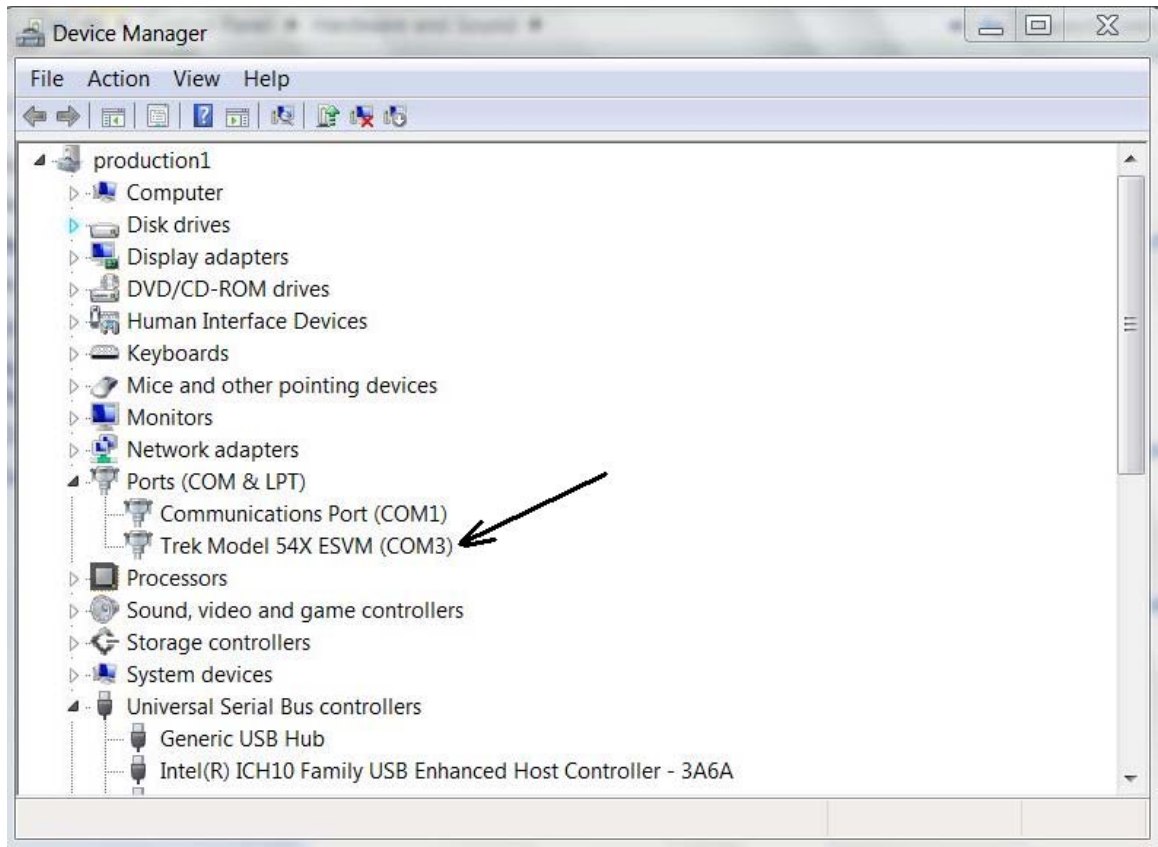


Select Close.

12. Next, you will see that there is a new Item Highlighted in the Device Manager.



US Serial Port. **Right** click on this, and select “Update driver software” selection. Follow steps 8-11 again. At the completion of this, the Trek instrument will be properly installed in Windows 7.



Note the serial port (in this instance, COM3) as you may need this to run the instrument software.